



Library Connections

A newsletter of Warner Memorial Library

December 2024

END OF SEMESTER EXTENDED LIBRARY HOURS

Beginning December 2

Monday - Thursday 8 AM - 12 AM

Friday 8AM - 9PM

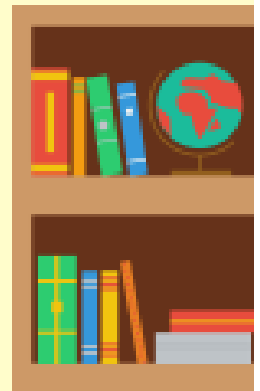
Saturday 10AM - 9PM

Sunday 2PM - 12 AM

then

Friday, December 13 : 8AM - 8PM

Saturday, December 14: 8:30AM - 3PM



RefWorks news: Time for an update

By Robyn Cunningham, Research & Outreach Librarian

Starting December 2024, Refworks' tool Write-N-Cite (WnC) will no longer be supported. WnC is a writing tool add-in for Microsoft Word. If you use this tool, you will need to upgrade to RefWorks Citation Manager (RCM).



ProQuest RefWorks

RefWorks Citation Manager (RCM) is an add-in feature that allows users to run a simplified version of RefWorks inside of Microsoft Word. If you primarily use Word for your assignments, it is worth looking into. Some of the features include:

- Automatically update your bibliography
- Easily add in inline & footnote citations
- Collaborate with others by sharing Projects

To learn more about RCM, visit this website: [RefWorks Citation Manager \(RCM\) for Word](#)

For more information and instructions on making the switch from WnC to RCM, please visit this website: [Write-N-Cite \(WnC\) to RefWorks Citation Manager \(RCM\) Migration](#)

Learn more about RefWorks by using our research guide: <https://libguides.eastern.edu/new-refworks>

The poster has a light beige background with a repeating pattern of small donuts. At the top left is an illustration of a box of various donuts. At the top right is a pile of coffee beans. In the center, the text reads "Warner Library's Donut Nite" in a mix of bold serif and cursive fonts. Below that, it says "with COFFEE, TEA, & HOT CHOCOLATE". At the bottom, it states "Tuesday, 12/10 9PM 'til the donuts are gone!". A callout box on the right says "All attendees will be entered in our PRIZE RAFFLE!!". At the bottom left is a cup of coffee, and at the bottom right is a large chocolate-glazed donut.

All attendees
will be entered
in our PRIZE
RAFFLE!!

Warner Library's Donut Nite

with COFFEE, TEA, &
HOT CHOCOLATE

Tuesday, 12/10
9PM 'til the donuts are gone!

OUT OF THE BOX!



*By Caroline Coriell, Information Literacy Librarian
(and starring her cat, Panda, in a box)*

Out Of The Box is a new segment where we share requests that have been placed in our suggestion box and how we've addressed them. If anything comes up that we can't assist you with, we'll do our best to direct you to someone who can help.

Starting off with some completed requests: there were requests for a trash can, a whiteboard and whiteboard markers to be added to the 24 hour study room. Facilities has installed a whiteboard and brought in a trash can. We've also added markers down there. How long they last is up to you.

We had a request to acquire *Impulse* by Ellen Hopkins, and a request for us to acquire books by Lisa Jewell and April Henry. When those come in, we'll let you know via Instagram, and they will be shelved on the New Books bookcase before they move to their more permanent home.

We had a request for 'snack themed days,' with the example of free mints on National Mint Day. I've made a list of food themed holidays, and we're currently determining if we can implement this, and what days we can do. You'll have to swing by on February 19th to see if Mint Day makes the cut.

Speaking of snacks, someone requested a full and functional vending machine in the library or HHC. I'm with you on that one, but that's not within our domain. I would advise you to contact Sodexo, [or use the feedback form on their website](#).

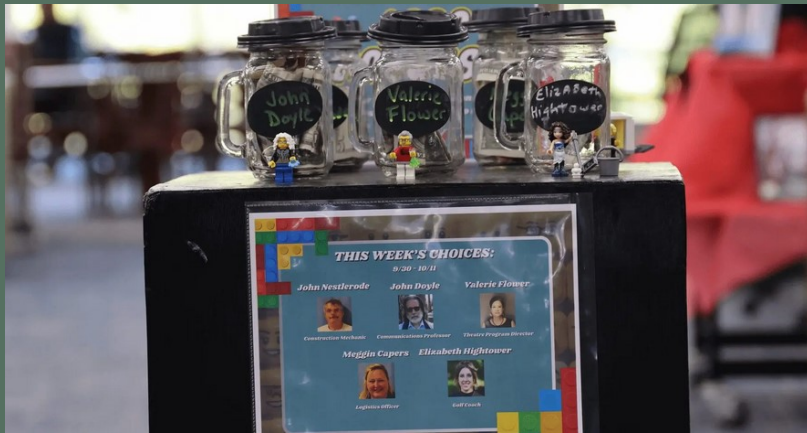
We had multiple requests to expand our hours, particularly on Friday and Saturday. We determine our hours based on usage. You may have seen a librarian or student worker walking around the library at the start of the hour, clicking something. That's us taking count. We have a whole process of logging this so at the end of each semester, we can take a look at the numbers and see if there are enough students using the library to justify changing our hours. I can't tell you what we'll find yet, but *if* we extend our hours, the library will likely be staffed by student workers. I would encourage you to be part of the change you want to see by applying for the position on Handshake or asking for a copy of the application at the circulation desk. Even if we aren't actively hiring, Kathy Hecht, Access Services Librarian, holds onto applications in the event that something does become available.

Finally, we have suggestions for more private study space. Many of you feel the loss of study rooms, and would like to have them 'reinstated', or have more made available. We are working with the ARC to try and make some spaces available after hours. If you feel frustrated, dismayed or otherwise inconvenienced by these changes, I would encourage you to reach out to ideas@eastern.edu. That's the best way to communicate your suggestions about creating other 24 hour study spaces, study rooms or even expanding the Breezeway's hours, so you can fuel up while you burn the midnight oil.

Thank you for sharing your suggestions with us, and we hope to hear more from you in the future.

We've been featured in 2 *Waltonian* videos!

Check them out [on their website](#), or click on the photos below!



[Lego City takes on Eastern University](#)

By Jason Karch

[Halloween Mini Golf at Warner Library](#)

By Seamus Feeley



WARNER LIBRARY'S
LEGO
CONTEST

*Donate to vote each week on which
faculty/staff is added to the
Lego Campus!*

Your vote
donations
go to the
library's
fund for
future
events!

;))



Ask Paisley the Library Cat!
Send your library-related
questions to
[reference1777@eastern.edu!](mailto:reference1777@eastern.edu)

Dear Paisley,

Question: Relationship Advice, Please, Mrs. Wise El-Gato!

Submitted by Anonymous

Dear Anonymous,

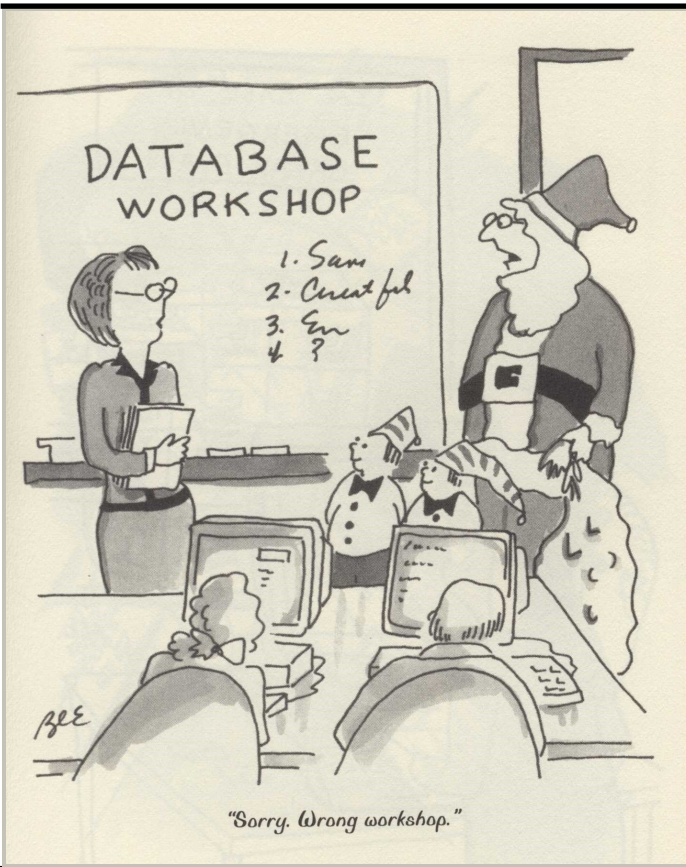
Funny you would ask, cats don't mate for life, you know. So, take my advice lightly as my own romantic life is cat-a strophic. But with humans, I have found a few helpful tidbits that make our lives together better, maybe these might be of use: cuddle often, prioritize snack time together and have good boundaries.

Since I am the library cat, I purr-used what research there is on the topic available through the library. By simply typing in "college relationship advice" in the Eagle search bar on the [library website](#), I found there are over 4,000 resources listed on your topic: books, eBooks and articles. There are articles and books on so many aspects of dating, loneliness and communication skills. One interesting study that showed up from an academic journal warned about the pitfalls of getting relationship advice from advice columns.

I also tried typing "cat romance" into the Eagle search bar, and there are over 1,300 items. I better cut this short, so I can get reading.

Remember nobody's purrfect,

Sincerely, Paisley the Library Cat



Here's a little
library-themed
comic for you...
Enjoy!

Image from: *Interlibrary Loan Sharks and Seedy Roms: Cartoons from Libraryland* by Benita L. Epstein



Keep in touch with all the library's updates on our Instagram page!